

HOW TO READ GUITAR TABLATURE

Guitar Tablature is a method used by guitarists to specify the note which has to be played on the guitar. This method is different from Staff Notation and uses Fret Numbers on the Tablature Staff (6 Lines for 6 Strings) in order to denote the note which has to be played.

Figure Number	Explanation
One	Shows the Guitar Tab.
Two	Shows how Single Notes are written on the tab.
Three	Shows how Simultaneous Notes (Chords) are written on the tab.

Figure 1

The Tablature Staff

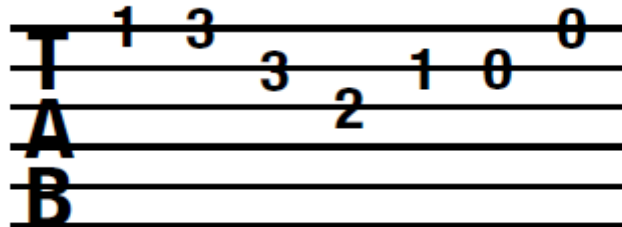
Strings



The 6 lines correspond to the 6 strings on your guitar.

Figure 2

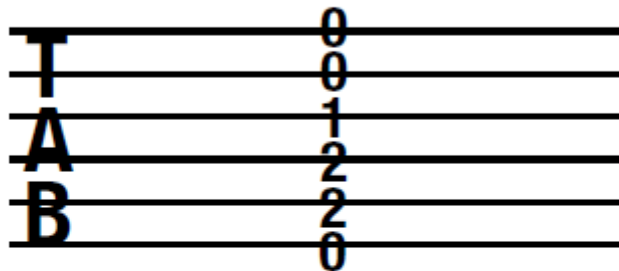
Single Notes in Tablature



The numbers tell you which frets you need to put your fingers on and which strings to use. In this example you would play the first string fretted at the first fret. The next note would be the first string at the third fret. Then, the second string at the third fret and so on.

Figure 3

Chords in Tablature



In this example you would play all of the strings at the same time. The first, second and sixth strings would be open. Your first finger would fret the first fret on the third string. The fourth and fifth strings would have fingers on the second frets of each string.